
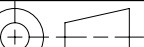


MATERIAL SPECIFICATIONS:			PAINT - COLOR			00	25014	TGL	07/22/2015																	
NOTED			NONE																							
OTHER TREATMENTS AND FINISHES			PAINT - GLOSS		PAINT - PERFORMANCE	PAINT - ACCEPTANCE																				
NONE								REV	ECO BY DATE																	
SCALE:		DO NOT SCALE DWG	TOLERANCES UNLESS OTHERWISE SPECIFIED			GENERAL NOTES																				
NONE						PRIMARY DIMENSIONS ARE METRIC. SECONDARY DIMENSIONS WITH BRACKETS ARE INCH. UNLESS OTHERWISE SPECIFIED ALL DIMENSIONS ARE AFTER TREATMENTS AND FINISHES.																				
DWN: TIM LAROCQUE 03/20/2015			<table><tr><th>METRIC TOLERANCES</th><th>INCH EQUIVALENT</th></tr><tr><td>LINEAR</td><td>± 0.75</td><td>$\pm .030$</td></tr><tr><td>SLOT WIDTH</td><td>± 0.25</td><td>$\pm .010$</td></tr><tr><td>HOLE DIA</td><td>± 0.25</td><td>$\pm .010$</td></tr><tr><td>ANGULAR</td><td>$\pm 2^\circ$</td><td></td></tr><tr><td>MACH SURFACES</td><td>3.2 RMS</td><td>125 RMS</td></tr></table>			METRIC TOLERANCES	INCH EQUIVALENT	LINEAR		± 0.75	$\pm .030$	SLOT WIDTH	± 0.25	$\pm .010$	HOLE DIA	± 0.25	$\pm .010$	ANGULAR	$\pm 2^\circ$		MACH SURFACES	3.2 RMS	125 RMS	PROPRIETARY INFORMATION MAY NOT BE REPRODUCED OR DISCLOSED TO OTHERS WITHOUT WRITTEN PERMISSION OF TENNANT COMPANY.		
METRIC TOLERANCES	INCH EQUIVALENT																									
LINEAR	± 0.75	$\pm .030$																								
SLOT WIDTH	± 0.25	$\pm .010$																								
HOLE DIA	± 0.25	$\pm .010$																								
ANGULAR	$\pm 2^\circ$																									
MACH SURFACES	3.2 RMS	125 RMS																								
MDR: MIKE REZNICEK 07/22/2015																										
DES: JOHN HAEG 03/20/2015																										
PART NAME:			SHEET 1 OF 4						DWG D SIZE																	
CIRCUITBOARD ASSY, [SENTINEL]									PART NUMBER 1074777																	

E

D

C

B

A

E

D

C

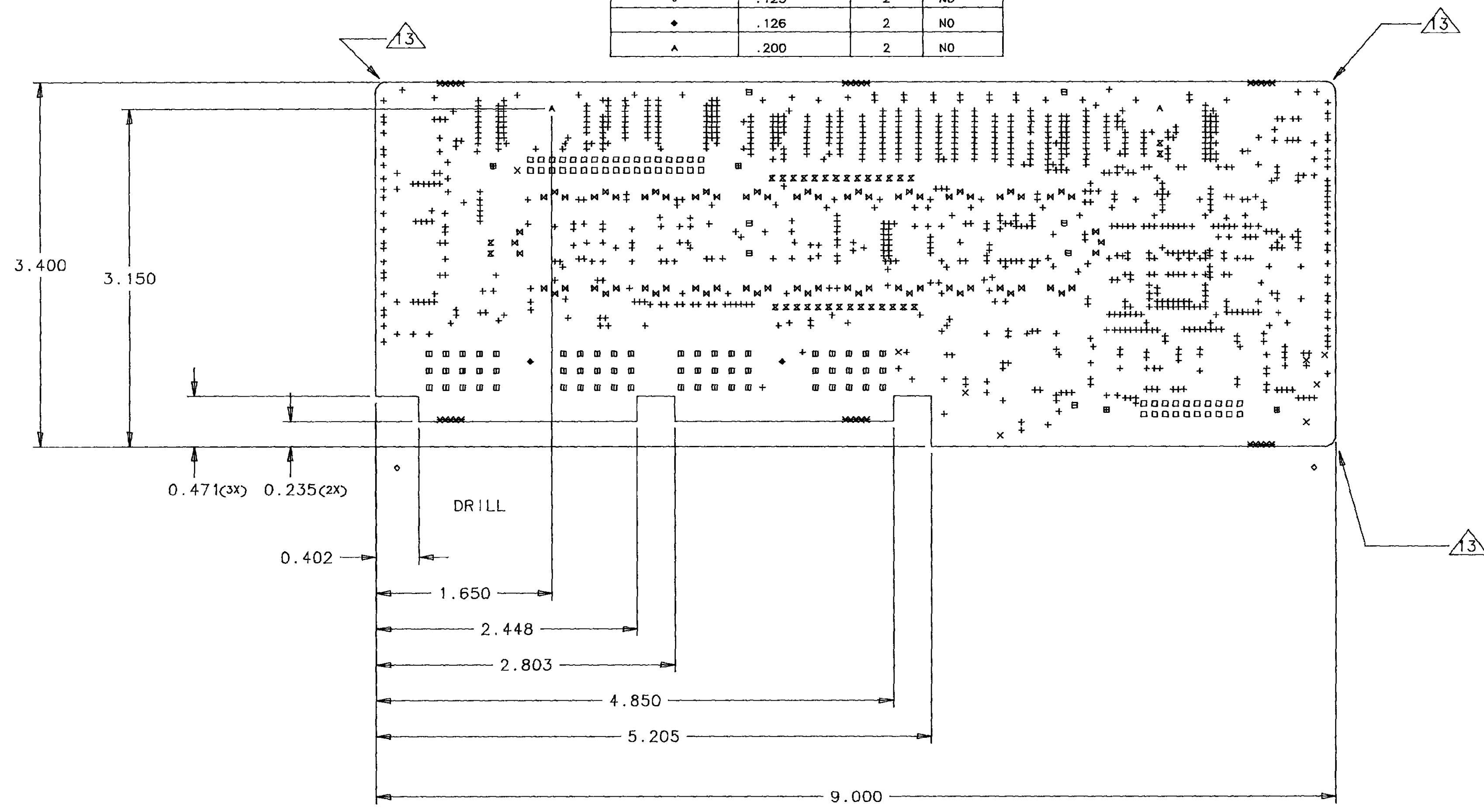
B

A

BOARD'S DRILL SCHEDULE

DRILL SYMBOL	DRILL SIZE	COUNT	PLATED
+	.013	1065	YES
x	.028	8	YES
✕	.031	30	NO
□	.035	54	YES
✕	.039	32	YES
✕	.050	72	YES
□	.052	60	YES
□	.100	7	NO
□	.110	4	NO
○	.125	2	NO
+	.126	2	NO
△	.200	2	NO

- NOTES:
- UNLESS OTHERWISE SPECIFIED FABRICATE PER IPC #600.
 - MATERIAL IS GFN, 8 LAYER, .062 THK +/- .007 PER MIL-P-13949.
 - CONDUCTOR THICKNESS TO BE 2 OUNCE.
 - CO-PLANER CONDUCTOR SPACING .005 MINIMUM.
 - LAYER TO LAYER SPACING .005 MINIMUM.
 - PLATED THROUGH HOLE COPPER .001 MINIMUM.
 - LOCATE VENDOR LOGO AND DATE CODE ON BOARD, PREFER BOTTOM SIDE.
 - SOLDER MASK PER IPC SM840, TYPE B1, ON BOTH SIDES - COLOR GREEN. APPLY SOLDER MASK OVER BARE COPPER.
 - SILKSCREEN - BOTH SIDES - COLOR WHITE.
 - HOLE SIZES ARE FINISHED SIZE, TOLERANCE +.003 -.003.
 - THE .013 DIA. HOLES CAN BE PLUGGED/FILLED.
 - .060 MAX. RADIUS FOR ALL INSIDE CORNERS.
 - .100 RAD. ON SPECIFIED CORNERS.
 - BOARDS TO BE BUILT WITH BREAKAWAY TABS. SEE SHEET 2 FOR DIMENSIONS.



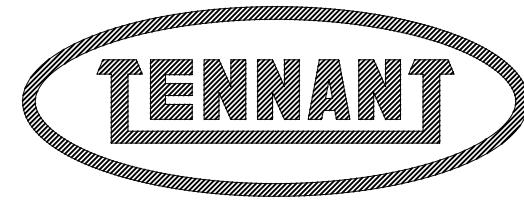
	CAD FILE NAME
PASTE MASK, COMP SIDE	AW13.GBR
SILKSCREEN, TOP SIDE	AW11.GBR
SOLDER MASK, TOP SIDE	AW9.GBR
LAYER 1, TOP SIDE	AW1.GBR
LAYER 2, SIGNAL	AW2.GBR
LAYER 3, SIGNAL	AW3.GBR
LAYER 4, GROUND PLANE	AW4.GBR
LAYER 5, POWER PLANE	AW5.GBR
LAYER 6, SIGNAL	AW6.GBR
LAYER 7, SIGNAL	AW7.GBR
LAYER 8, BOTTOM SIDE	AW8.GBR
SOLDER MASK, BOTTOM SIDE	AW10.GBR
SILKSCREEN, BOTTOM SIDE	AW12.GBR
PASTE MASK, BOTTOM SIDE	AW14.GBR
DRILL	AW15.GBR
SILKSCREEN, TOP, FOR ASSY	AW16.GBR
SILKSCREEN, BOT, FOR ASSY	AW17.GBR

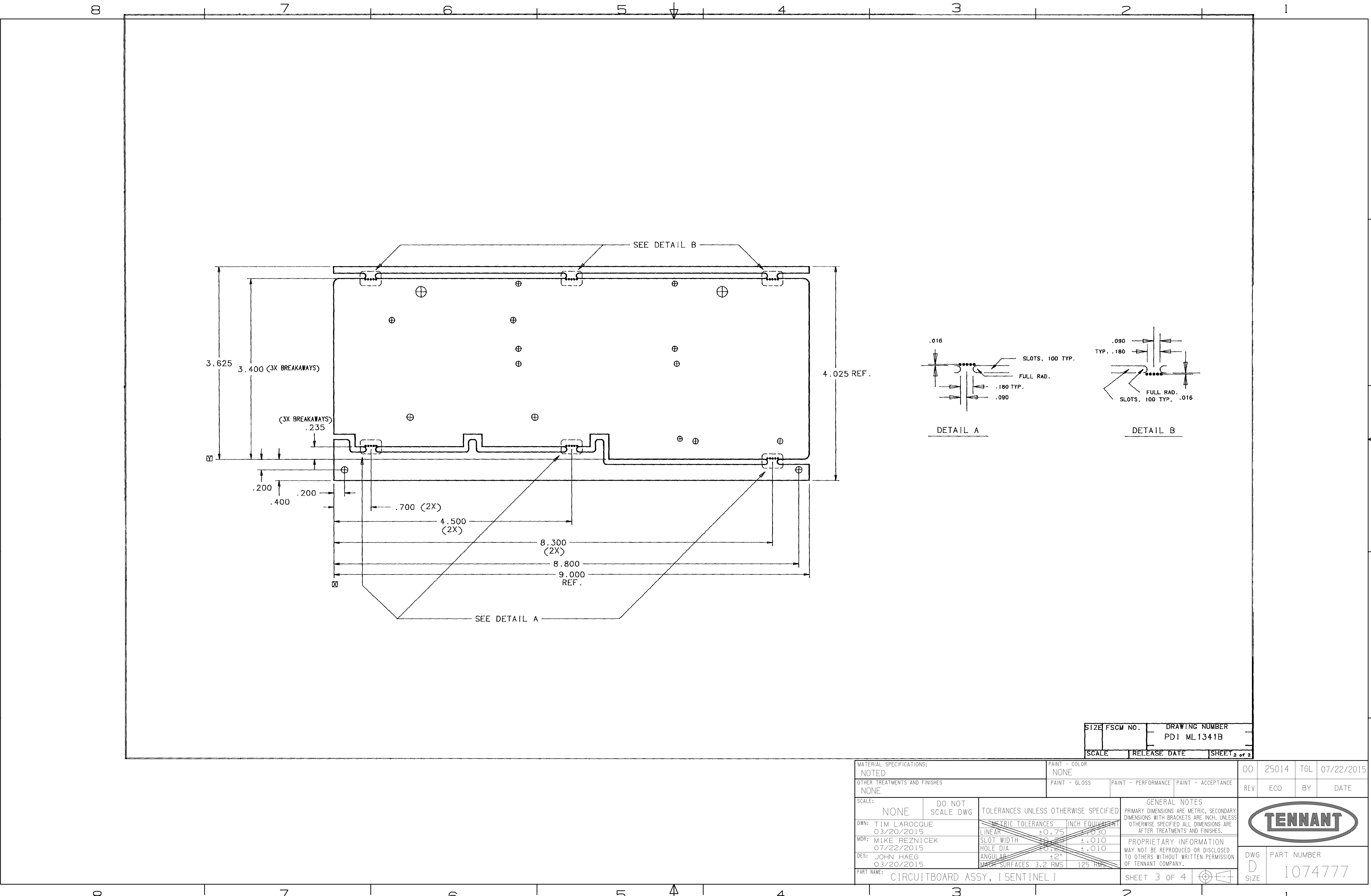
LAYUP - 8 LAYER

VIEWED FROM TOP SIDE


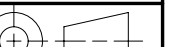
UNLESS OTHERWISE SPECIFIED DIMENSIONS ARE IN INCHES TOLERANCES ANGLES +/- 3 DEG. 2 PLACE DIMENSIONS +/- .02 3 PLACE DIMENSIONS +/- .010	CONTRACT NO.		DRAWN PDI		DATE 8-4-98		PRECISION DIVERSIFIED INDUSTRIES INC.	
	CHECK		DESIGN		DESIGN ACTIVITY		TITLE TENNANT P/N 768585 REV. 2 POLAR BEAR	
	CUSTOMER		SIZE		FSCM NO.		DRAWING NUMBER PD1 ML1341B	
	SCALE		RELEASE DATE		SHEET 1 of 2			

MATERIAL SPECIFICATIONS: NOTED		PAINT - COLOR NONE		00		25014		TGL		07/22/2015	
OTHER TREATMENTS AND FINISHES NONE		PAINT - GLOSS		PAINT - PERFORMANCE		PAINT - ACCEPTANCE		REV		ECO BY DATE	
SCALE: NONE		DO NOT SCALE DWG		TOLERANCES UNLESS OTHERWISE SPECIFIED		GENERAL NOTES PRIMARY DIMENSIONS ARE METRIC, SECONDARY DIMENSIONS WITH BRACKETS ARE INCH, UNLESS OTHERWISE SPECIFIED ALL DIMENSIONS ARE AFTER TREATMENTS AND FINISHES.					
DWN: TIM LAROCQUE 03/20/2015		MDR: MIKE REZNICEK 07/22/2015		DES: JOHN HAEG 03/20/2015		PART NAME: CIRCUITBOARD ASSY, [SENTINEL]		SHEET 2 OF 4		DWG D SIZE	
										PART NUMBER 1074777	





SIZE	FSCM NO.	DRAWING NUMBER
		PD1 ML1341B
SCALE	RELEASE DATE	SHEET 2 of 2

MATERIAL SPECIFICATIONS:			PAINT - COLOR			00	25014	TGL	07/22/2015		
NOTED			NONE								
OTHER TREATMENTS AND FINISHES			PAINT - GLOSS	PAINT - PERFORMANCE		PAINT - ACCEPTANCE		REV	ECO	BY	DATE
NONE											
SCALE:	DO NOT SCALE DWG	TOLERANCES UNLESS OTHERWISE SPECIFIED				GENERAL NOTES					
NONE						PRIMARY DIMENSIONS ARE METRIC. SECONDARY DIMENSIONS WITH BRACKETS ARE INCH. UNLESS OTHERWISE SPECIFIED ALL DIMENSIONS ARE AFTER TREATMENTS AND FINISHES.					
DWN: TIM LAROCQUE	03/20/2015	METRIC TOLERANCES		INCH EQUIVALENT		PROPRIETARY INFORMATION MAY NOT BE REPRODUCED OR DISCLOSED TO OTHERS WITHOUT WRITTEN PERMISSION OF TENNANT COMPANY.					
MDR: MIKE REZNICEK	07/22/2015	LINEAR		±0.75 ±0.30							
		SLOT WIDTH		±0.25 ±.010							
		HOLE DIA		±0.25 ±.010							
DES: JOHN HAEG	03/20/2015	ANGULAR		±2°							
		MACH SURFACES		3.2 RMS 125 RMS							
PART NAME:	CIRCUITBOARD ASSY, [SENTINEL]				SHEET 3 OF 4		DWG D SIZE	PART NUMBER			



