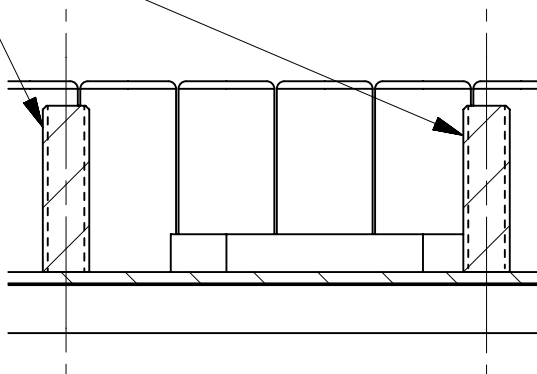


NOTE: UPDATE TO BOM TO CORRECT FET SELECTION  
SOFTWARE FILE NUMBER: Orion082014.out


REV 05 CHANGES:  
1. UPDATED BOM TO REMOVE OLD CONFORMAL COATING,  
ADDED NEW CONFORMAL COATING  
QPL NUMBER TO NOTES SECTION

ITEM NO	QTY	PART NUMBER	DESCRIPTION
1	4	1019218	WASHER, FLAT, 0.14B 0.31D, NYL
2	4	6920	SCREW, PAN, M3 X 0.5 X 10, 4.8
3	1	1015127	PLATE, SINK, HEAT
4	1	1016816	PAD, THERMAL, HEAT SINK

- ASSEMBLY NOTES:
1. THIS ASSEMBLY WILL BE BUILT USING QPL BILL OF MATERIAL BOM1069632revK.xls
2. WORKMANSHIP STANDARD PER: IPC-J-STD-001D, IPC-A-610.  
SOLDERING AND ELECTRICAL CONNECTIONS: IPC-S-815B
3. USE CONFORMAL COATING 050000-001  
MASKED AREA WILL HAVE NO CONFORMAL COATING ON THESE AREAS.  
A - COMPONENTS: J2, J5, J6, J8, J9, J10, J11, J15, J16, CR2, F2, J7.  
B - (12) MOUNTING HOLES AND UNDER SCREW HEADS AND WASHERS.  
C - AREA UNDER HEAT SINK SIL PAD ON BOTTOM OF PCB.
4. APPLY RTV SILICONE FOR MECHANICAL STRENGTH ON BOTH SIDES OF CAPACITORS, EXCEPT BETWEEN POWER LUGS J7 AND J11.
5. TORQUE SCREWS FOR HEAT SINK TO MIN 0.4519-.5084 Nm (63.99-71.99 OZ. INCH, 4.0-4.5 IN-LBS).
6. LABEL MUST CONTAIN THE FOLLOWING INFORMATION AND BE LOCATED BETWEEN J7 AND J11.  
A - TENNANT'S ASSEMBLY PART NUMBER WITH CURRENT REVISION (1069632-04).  
B - TENNANT'S QPL BOM PART NUMBER WITH CURRENT ALPHA REVISION. (SEE NOTE #1).  
C - MANUFACTURER PART NUMBER.  
D - MANUFACTURER SERIAL NUMBER.  
E - TO BE IN A POSITION WHERE RTV DOES NOT MASK THE PRINT ON THIS LABEL.  
F - MANUFACTURERS PART NUMBER MUST FACILITATE TRACEABILITY OF PARTS USED TO CREATE THE POPULATED BOARD.
7. LABEL MUST HAVE MACHINE MODEL LISTED. SEE "PART NAME" CELL BETWEEN [ ] FOR MACHINE MODEL.
8. NO VOIDS IN BOTTOM SIDE SOLDERMASK IN THIS AREA (HEAT SINK AREA).
9. PCB REWORK: SHORT TOGETHER PINS J6-15 AND J6-16 ON SIDE B.



SECTION A - A

MATERIAL SPECIFICATIONS: NOTED			PAINT - COLOR NONE			05	39040	CHS4	10/16/2023
OTHER TREATMENTS AND FINISHES NOTED			PAINT - GLOSS	PAINT - PERFORMANCE	PAINT - ACCEPTANCE	REV	ECO	BY	DATE
SCALE:	DO NOT SCALE DWG	TOLERANCES UNLESS OTHERWISE SPECIFIED			GENERAL NOTES				
DWN: JOHN HANSON 09/27/2011		METRIC TOLERANCES	INCH EQUIVALENT	PRIMARY DIMENSIONS ARE METRIC, SECONDARY DIMENSIONS WITH BRACKETS ARE INCH. UNLESS OTHERWISE SPECIFIED ALL DIMENSIONS ARE AFTER TREATMENTS AND FINISHES.					
MDR:		X.X ±1.5	±.06	PROPRIETARY INFORMATION MAY NOT BE REPRODUCED OR DISCLOSED TO OTHERS WITHOUT WRITTEN PERMISSION OF TENNANT COMPANY.					
DES: JOHN HANSON 09/27/2011		X.XX ±0.75	±.030						
		X.XXX ±0.250	±.0100			DWG D SIZE	PART NUMBER 1069632		
PART NAME:		CIRCUITBOARD, LOGIC (ORION)			SHEET 1 OF 1	